

LONG
THROWINTEGRATED POWER &
CONTROL WITH MULTIPLE
PRESETS3200 W
SELF-POWERED
3-WAY SYSTEMREAR PANEL
TOUCHSCREEN GUI
OPERATIONHIGH RESISTANCE
POLYUREA® FINISHBUILT-IN WHEELS
FOR EASY TRANSPORT

A single enclosure three-way system without equal. Equipped with a smart two-wheel transport system and with a weight of 63 kg, a single person can move this 3200 W enclosure into position for an instant, massive sound experience.

KEY FEATURES

TRANSDUCER TECHNOLOGY

Three-way full range active speaker system comprising a direct radiating 4-inch voice coil, 18" loudspeaker, one 3-inch voice coil, 12" neodymium magnet loudspeaker loaded to a mid frequency phase plug and one 1.75-inch voice coil diameter, 1.4-inch exit, PM4 diaphragm compression driver loaded to a 60° x 50° dispersion horn.

AMPLIFICATION

Onboard 3200 W 3rd generation Class D bi-amplification.

Universal switch mode power supply (SMPS) with Power Factor Correction (PFC), allowing constant power delivery from 85 to 265 VAC input and high efficiency (>90%), with extremely compact lightweight form factor.

Automatic EcoMode low power consumption mode when no signal input present.

Connectors mounted on an inclined, recessed moulded connector plate for improved security and environmental protection.

Double PowerCon® (input & link).

ADVANCED DSP SYSTEM CONTROL

Onboard 64-bit precision DSP loudspeaker system control manages amplifier gain and cross-over settings, peak and thermal limiters and mutes. Includes adjustable 294 ms / 100 m delay line for extensive alignment delay and 5-band fully configurable parametric EQ.

High order FIR filtering ensures fully phase coherent PEQ adjustment and absolute phase alignment of common cabinet coupling.

Extensive R&D'd factory presets provide instantaneous system configuration for common applications, including point-source PA, floor monitoring, speech and subwoofer coupling.

ALC (Adaptive Loudness Compensation) improves the listening experience when the system is used at low volume levels.

Operation and monitoring of system parameters, presets and user-adjustments is via Amate Audio's unique rear-panel 3.5" TFT colour touchscreen GUI. The front-panel Nítid backlit logo can be switched on or off, or set to indicate system limiting.

DESIGN & ACCESSORIES

Recessed ergonomic carry handles for easy handling.

Exclusive 2mm black mesh speaker grille with optimum perforation gradient and attractive appearance.

Multilayer birch plywood cabinet with Polyurea® coating, providing maximum robustness and strength for touring events production, venue installation and other highly demanding applications.

M8 rigging points for easy flying.

Built-in wheels for easy transport.

TECHNICAL FEATURES

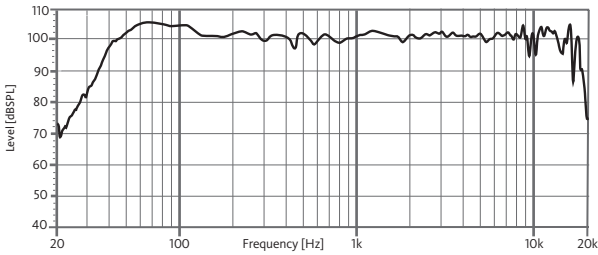
Amplifier (program)	2400 W (LF) + 800 W (MF-HF) Class D Bi-amplified
Input Sensitivity	8 dBu – 1.94 V
Input Impedance	50 kΩ Balanced
Mains	Universal Switch Mode Power Supply 85-265 V / 45-65 Hz
Average current draw	5.5 A (Heavy duty musical program)
SPL (1 m)	133 dB musical program, 136 dB peak
Built-in DSP	64-bit processing unit. Includes factory presets
AD/DA converters	24 bit – 48 kHz
Standby mode consumption	5 W @230VAC
Adjustable delay line	294 ms / 100 m
Crossover frequency	105 Hz / 1k7 Hz
Frequency response (-10 dB)	35 Hz - 19 kHz
Components	LF 18" woofer (4" voice coil) MF 12" neodymium woofer (3" voice coil) HF 1.75" PM4 diaphragm compression driver
Directivity (HxV)	60° x 50°
Directivity factor (Q)	20
Directivity Index (DI)	13 dB
Weight	63 Kg
Dimensions (HxWxD)	1230 x 520 x 540 mm
Finish	Multilayer birch plywood with high resistant black Polyurea® coating.
Grille	2 mm powder coated steel with black acoustic mesh
Rigging	M8 points
Connectors	1x XLR input / 1x XLR link / 1x AC PowerCon® input / 1x AC PowerCon® link



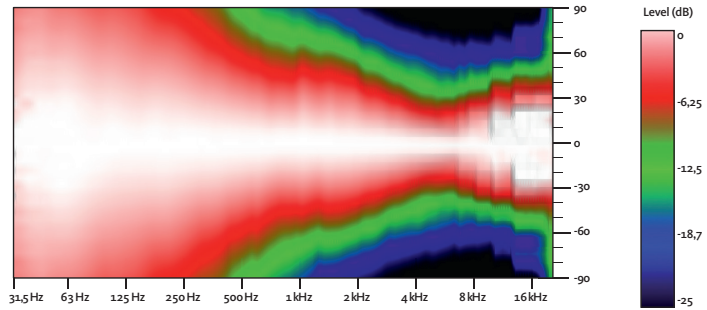
Amate Audio's latest generation DSP System management is integrated with 3rd generation Class D amplification. Colour touchscreen operation and monitoring of DSP System includes access to powerful presets - engineered by Amate Audio R&D team - that instantly configure your Nitid loudspeaker for the majority of common application environments within seconds, prior to rigging or installation.



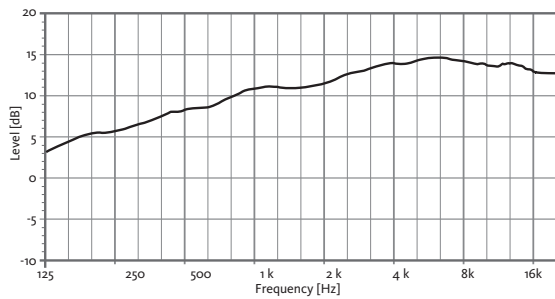
FREQUENCY RESPONSE 1w/1m (FLAT PRESET)



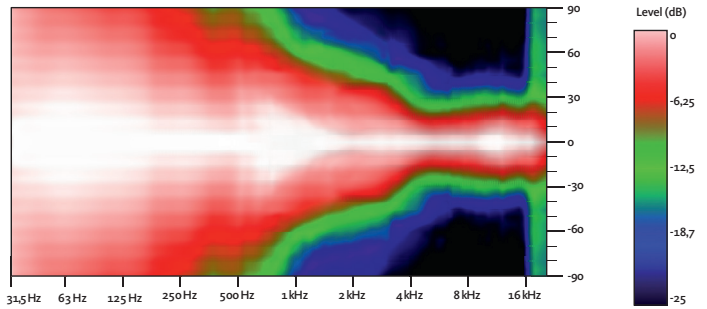
HORIZONTAL COVERAGE



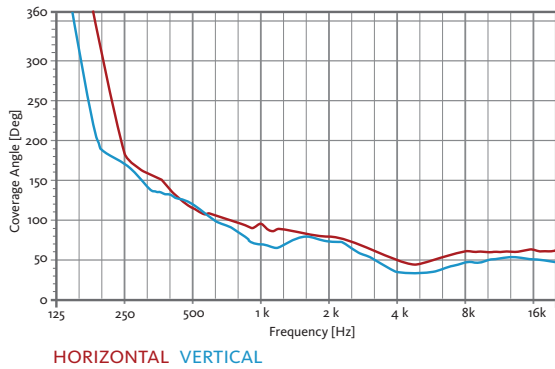
DIRECTIVITY INDEX (DI)



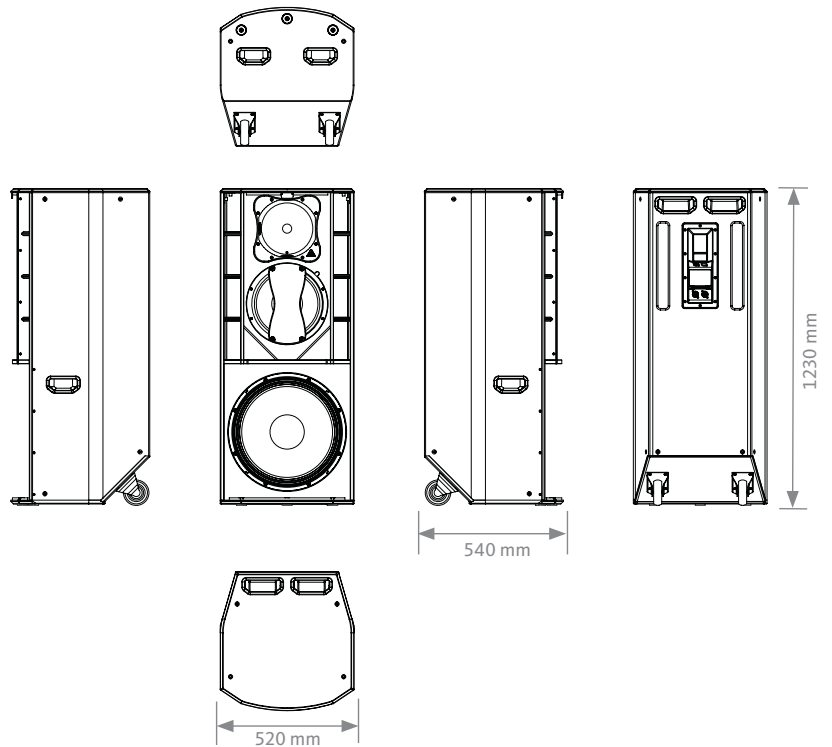
VERTICAL COVERAGE



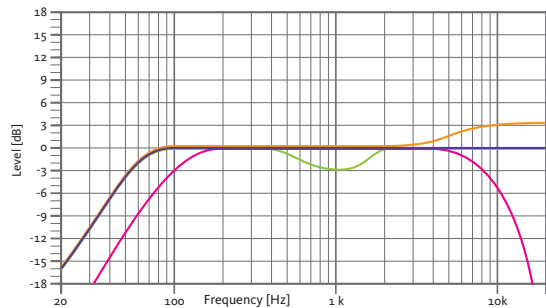
HORIZONTAL & VERTICAL BEAMWIDTH (-6dB point)



CAD DRAWING SCHEME



BUILT-IN PRESETS



FLAT

Flat response

NEARFIELD

-3 dB mid frequencies (700 Hz - 2 kHz)

SPEECH

HPF 75 Hz

LPF 8 kHz

LONGTHROW

+3 dB high frequencies

NÍTID

S318

THREE-WAY ACTIVE
FULL-RANGE SPEAKER SYSTEM

NÍTID



ACCESSORIES

PROTECTIVE COVER

NC-S318

for one unit of S318



M8 RIGGING EYEBOLT

ACR-M8



DISCOVER NÍTID

UNIQUE DESIGN

Distinguishing details include the speaker grille, exclusively designed for an attractive appearance, maximum protection, and with **the best perforation coefficient in the market, for improved sound quality**. The Polyurea® finish offers durable protection for the birch-ply cabinet, and electronic circuits and controls are smartly protected against moisture. A wide range of accessories is provided for whatever your application is.



THE PERFECT BALANCE

NÍTID series is the culmination of an intensive program of research, development and optimization, to achieve the greatest possible power and performance from the most compact sized cabinet. Every aspect of its form factor has resulted from examination and consideration of optimum acoustic response, ergonomics, construction and appearance.



AMAZING PERFORMANCE

The integrated **'plug & play'** active power and control system includes DSP presets for rapid setup and amazing sound, and the comprehensive control interface includes instantly recallable presets for setting up the NÍTID in just a few seconds. The accurate match between transducers, DSP and amplifiers provide a fully optimized system for the most demanding applications.



WITHOUT GRILLE

