



ASYMMETRICAL
DISPERSION
HORN



VERSATILE FoH PA
& STAGE MONITOR
SYSTEM



DEDICATED CONTROL
PRESETS with external
Amate Audio DSP
processors & processing
amplifiers



HIGH RESISTANCE
POLYUREA®
PAINT



ACCESSORIES
FOR EASY
INSTALLATION

The perfect compromise for any application. Main PA or stage monitoring. Superb vocal articulation and crystal clear high frequencies in a 700W cabinet give N12P7 an optimum balance in its class.

KEY FEATURES

TRANSDUCER TECHNOLOGY

Two-way full range passive speaker system composed by one direct radiating 2.5-inch voice coil, 12" loudspeaker and one 1,4-inch voice coil diameter, PETP diaphragm compression driver loaded to an asymmetrical rotational horn (50° to 100° x 55° dispersion).

POWER & CONTROL

700W continuous musical program power handling.

An accurate internal passive crossover achieves optimum performance with high levels of protection for the high frequency driver.

Connectors are mounted on an inclined plane effectively protecting them against rain or moisture.

Double Speakon NL4MPR® (input & link).

Dedicated control presets available with Amate Audio LMS series DSP processors and TPD series processing amplifiers.

DESIGN & ACCESSORIES

Ergonomic handles for an easy handling.

Trapezoidal shape for PA or stage monitor application.

Exclusive 2mm black mesh speaker grille with optimum perforation gradient and attractive appearance.

Multilayer birch plywood cabinet with Polyurea® coating, offering maximum reliability and strength for touring as well as for high demanding applications.

M8 rigging points for easy flying.

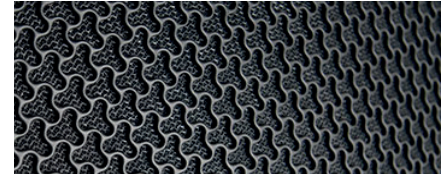
35mm diameter pole mount socket mounted on the bottom side, for a standard tripod.

Protective rubber profiles.

TECHNICAL FEATURES

Power (musical program)	700 W				
Power (r.m.s)	350 W				
Nominal Impedance	8 Ω				
SPL(1W/1m)	98 dB				
Maximum SPL (continuous/1m)	127 dB				
Maximum SPL (peak/1m)	130 dB				
Crossover frequency	2k Hz				
Frequency Response (-10dB)	52 Hz – 19 kHz				
Components	<table border="0"> <tr> <td>LF - MF</td> <td>12" woofer (2.5" voice coil)</td> </tr> <tr> <td>HF</td> <td>1,4" PETP diaphragm compression driver</td> </tr> </table>	LF - MF	12" woofer (2.5" voice coil)	HF	1,4" PETP diaphragm compression driver
LF - MF	12" woofer (2.5" voice coil)				
HF	1,4" PETP diaphragm compression driver				
Directivity (-6dB)	50° to 100° x 55°				
Directivity factor (Q)	12.6				
Directivity Index (DI)	11 dB				
Weight	19.2 kg				
Finish	Multilayer birch plywood with high resistant black Polyurea® coating and protective rubber profiles				
Dimensions (H x W x D)	623 x 360 x 390 mm				
Grille	2 mm powder coated steel with black acoustic mesh				
Rigging	M8 points				
Connectors	1x Speakon NL4MPR input / 1x Speakon NL4MPR link				

DISCOVER NÍTiD



UNIQUE DESIGN

Distinguishing details include the speaker grille, exclusively designed for an attractive appearance, maximum protection, and with **the best perforation coefficient in the market, for improved sound quality**. The Polyurea® finish offers durable protection for the birch-ply cabinet. A wide range of accessories is provided for whatever your application is.



THE PERFECT BALANCE

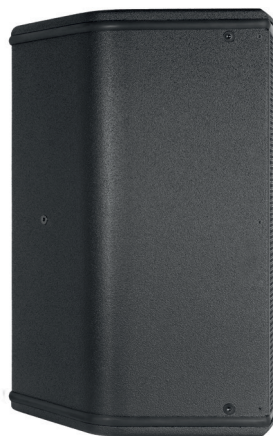
NÍTiD series is the culmination of an intensive program of research, development and optimization, to achieve the greatest possible power and performance from the most compact sized cabinet. Every aspect of its form factor has resulted from examination and consideration of optimum acoustic response, ergonomics, construction and appearance.



TOP VIEW



BOTTOM VIEW



SIDE VIEW

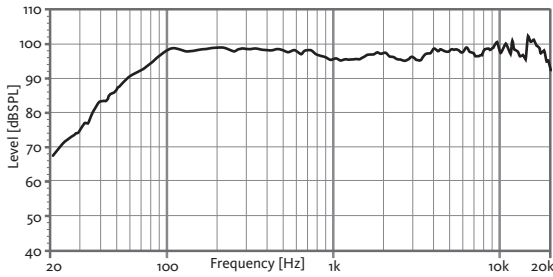


FRONT VIEW

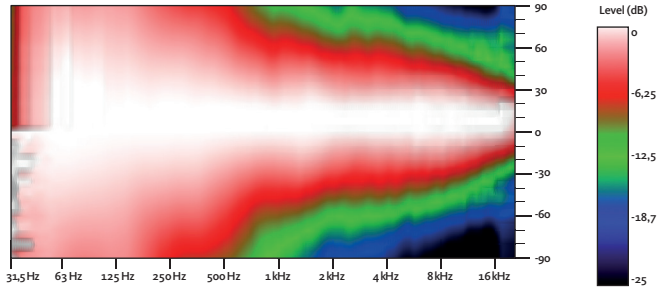


REAR VIEW

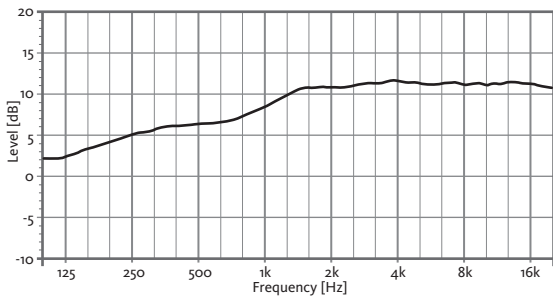
FREQUENCY RESPONSE 1w/1m



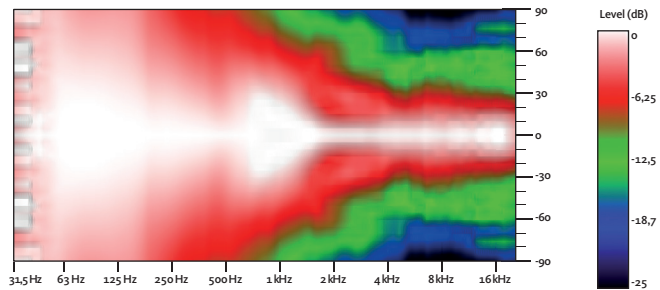
HORIZONTAL COVERAGE



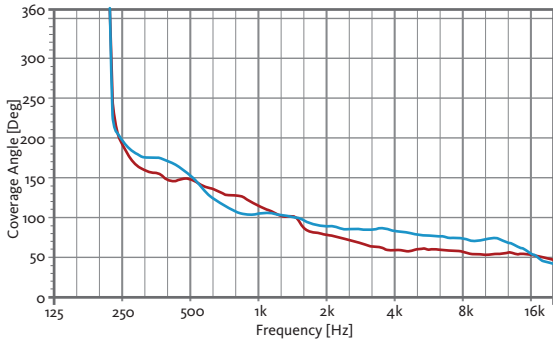
DIRECTIVITY INDEX (DI)



VERTICAL COVERAGE

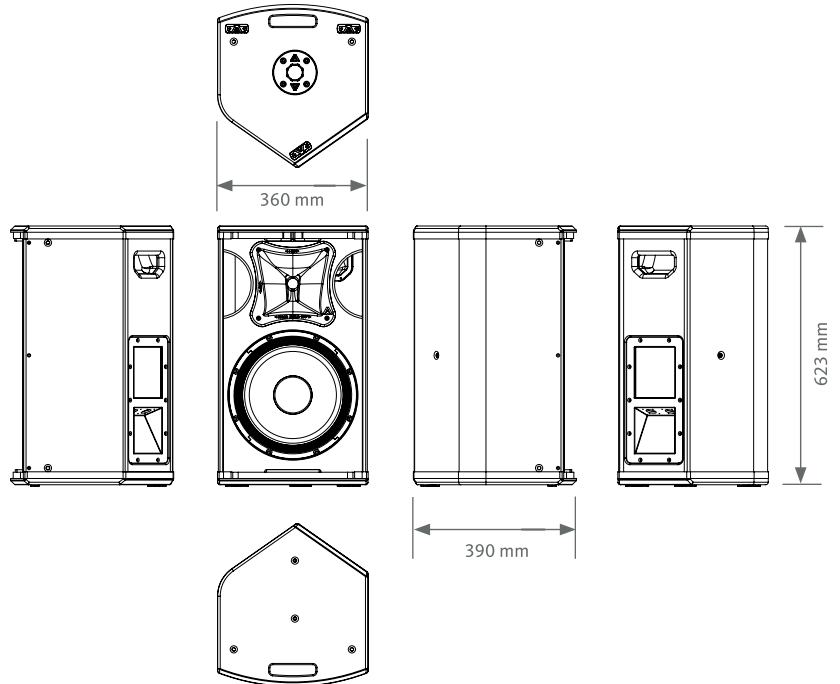


HORIZONTAL & VERTICAL BEAMWIDTH (-6dB point)

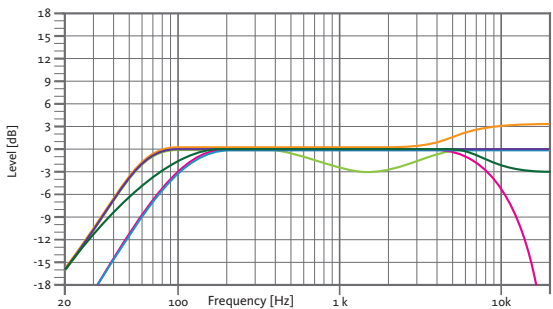


HORIZONTAL VERTICAL

CAD DRAWING SCHEME



RECOMMENDED PRESETS with external Amate Audio DSP



FLAT

Flat response

NEARFIELD

-3 dB mid frequencies (400 Hz - 4 kHz)

LONGTHROW

+3 dB high frequencies

SPEECH

HPF 100 Hz

LPF 8 kHz

MONITOR

Stage monitor use

XOVER

HPF 100 Hz

N12P7

12" TWO-WAY PASSIVE FULL-RANGE SPEAKER SYSTEM

NÍTiD



ACCESSORIES

FLIGHT CASE

FC-N12
for two units of N12P7



WALL MOUNT BRACKET

UB-L



WALL-MOUNT BRACKET

SP-WHR



FLYING BAR

HR-S



M8 RIGGING EYEBOLT

ACR-M8



TELESCOPIC DISTANCE ROD

SP-CRTL

ø: 35 mm
Length: 55 cm ~ 90 cm
Thread: M20



FLYING BAR WITH HOOK

HR-S/GT



SAFETY SLING

SC-15



RECOMMENDED CONFIGURATION

FOR N12P7 (2 units)

Connect each cabinet output of the amplifier LEFT/RIGHT to each cabinet using two independent wires.

FOR N12P7 (4 units)

Connect the amplifier's output to the Speakon's input of the first cabinet. Then, make a bridge from the first cabinet to the second one. This configuration allows you to connect up to four cabinets to the same amplifier.



LMS206 / LMS608



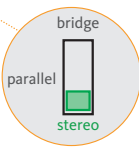
HD3200
Stereo mode



N12P7



N12P7



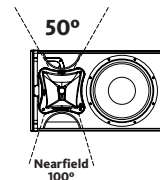
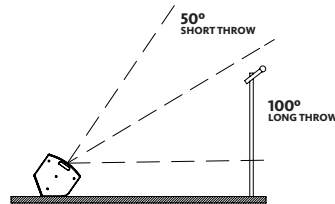
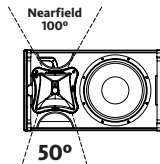
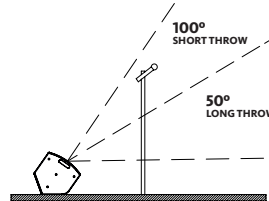
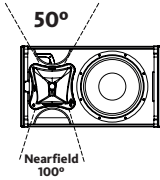
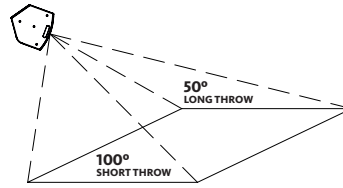
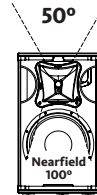
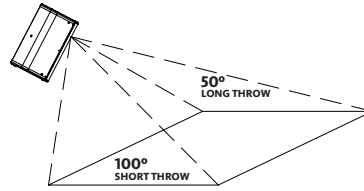
N12P7



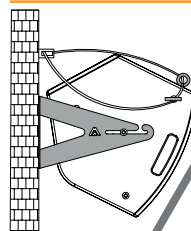
N12P7

ASYMMETRICAL DISPERSION HORN

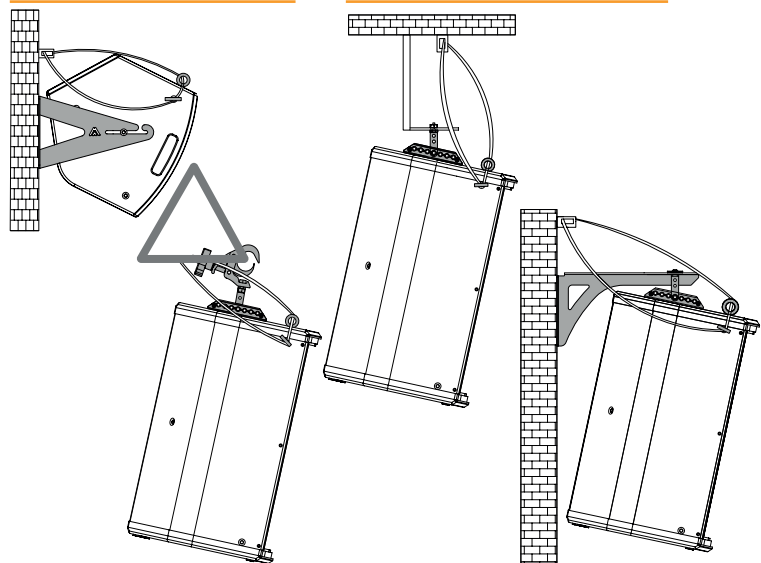
It allows to optimize the coverage depending on its position.



HORIZONTAL WALL-MOUNT UB-L + SC-15



VERTICAL COLUMN-MOUNT HR-S + SC-15



VERTICAL TRUSS-MOUNT HR-S/GT + SC-15

VERTICAL WALL-MOUNT SP-WHR + SC-15