

N12A6

12" TWO-WAY ACTIVE
FULL-RANGE
SPEAKER SYSTEM

NÍTiD



ASYMMETRICAL
DISPERSION
HORN



VERSATILE FoH PA
& STAGE MONITOR
SYSTEM



INTEGRATED POWER
& CONTROL WITH
MULTIPLE PRESETS



HIGH RESISTANCE
POLYUREA® FINISH &
PROTECTIVE RUBBER
PROFILES



EASY RIGGING &
INSTALLATION
ACCESSORIES

The perfect compromise for any application. Main PA or stage monitoring. Superb vocal articulation and crystal clear high frequencies in a 600W cabinet give N12A6 an optimum balance in its class.

KEY FEATURES

TRANSDUCER TECHNOLOGY

Two-way full range active speaker system comprising a direct radiating 2.5-inch voice coil, ferrite magnet 12" loudspeaker and one 1.4-inch voice coil diameter, PETP diaphragm ferrite magnet compression driver loaded to an asymmetrical rotational horn (50° to 100° x 55° dispersion).

AMPLIFICATION

Onboard 600 W 3rd generation Class D bi-amplification.

Universal switch mode power supply (SMPS) with Power Factor Correction (PFC), allowing constant power delivery from 85 to 265 VAC input and high efficiency (>90%), with extremely compact lightweight form factor.

Rear connections and control panel with LCD screen to display the different settings, presets, volume and adjustments done by the user. Our SensitiveTouch® capacitive sensor keypad guarantees the reliability of the system even under humidity and extreme weather conditions.

Automatic EcoMode low power consumption mode when no signal input present.

Connectors mounted on an inclined recessed moulded connector plate for improved security and environmental protection.

Double PowerCon® connectors (input & link)

DSP & CONTROL

Internal DSP with all necessary signal processing (crossovers, EQ's, delay, limiter, gain control, mute, input dynamic compressor) as well as several useful presets to adjust N12A6 to different requirements.

The on-screen output power display and the front NÍTiD backlight help to easy monitor the system. The backlight can be switched on or off, or set to indicate when the system is limiting.

ALC (Adaptive Loudness Compensation) improves the listening experience when the system is used at low volume levels.

ECO Mode available.

5-band EQ menu with five parametric equalizers.

DESIGN & ACCESSORIES

Recessed ergonomic carry handles for easy handling.

Asymmetric trapezoidal form for PA or floor monitor application.

Exclusive 2mm black mesh speaker grille with optimum perforation gradient and attractive appearance.

Multilayer birch plywood cabinet with Polyurea® coating and protective rubber profiles, providing maximum robustness and strength for touring, events production, venue installation and other highly demanding applications.

M8 rigging points for easy flying.

35mm diameter pole mount socket mounted on the bottom side, for a standard tripod.

TECHNICAL FEATURES

Amplifier (program)	500 W (LF) + 100 W (HF) Class D Bi-amplified	
Input sensitivity	8 dBu – 1.94 V	
Input impedance	20 kΩ Balanced	
Maximum input level	20 dBu	
Mains	Universal Switch Mode Power Supply 85-265 V / 45-65 Hz	
Average current draw	0.9 A (Heavy duty musical program)	
SPL (1m)	126 dB musical program, 129 dB peak	
Built-in DSP	48-bit processing unit. Includes factory presets	
AD/DA converters	24 bit – 48 kHz	
Standby mode consumption	< 5 W	
Adjustable delay line	118 ms / 40 m	
Crossover frequency	2k4 Hz	
Frequency response (-10dB)	52 Hz – 19 kHz	
Components	LF-MF HF	12" woofer (2.5" voice coil) 1.4" PETP diaphragm compression driver
Directivity (-6dB)	50° to 100° x 55°	
Directivity factor (Q)	12.6	
Directivity Index (DI)	11 dB	
Weight	20 Kg	
Dimensions (H x W x D)	623 x 360 x 390 mm	
Finish	Multilayer birch plywood with high resistant black Polyurea® coating and protective rubber profiles	
Grille	2 mm powder coated steel with black acoustic mesh	
Rigging	M8 points	
Connectors	1x XLR input / 1x XLR link / 1x AC PowerCon® input / 1x AC Power-Con® link	



CONTROL PANEL

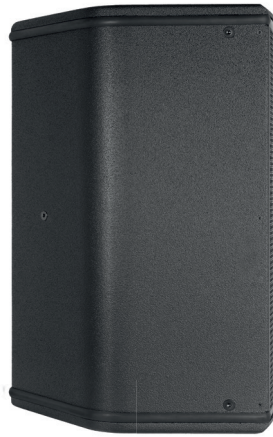
Our latest digital signal processing (DSP) is integrated with 3rd generation Class D amplification and operated via our dedicated SensitiveTouch™ keypad technology. With no mechanical components or moving parts, the SensitiveTouch™ capacitive sensor keypad is highly responsive, weatherproof and durable compared with conventional electronic controls and effectively failsafe. With the SensitiveTouch™ keypad and display, you can set-up the N12A6 in just seconds.



TOP VIEW



BOTTOM VIEW



SIDE VIEW

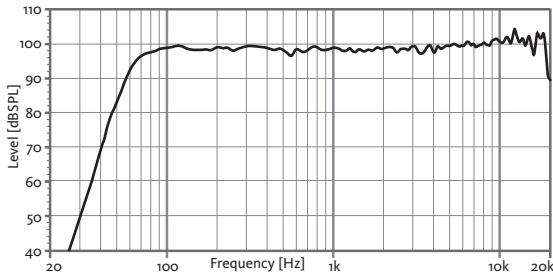


FRONT VIEW

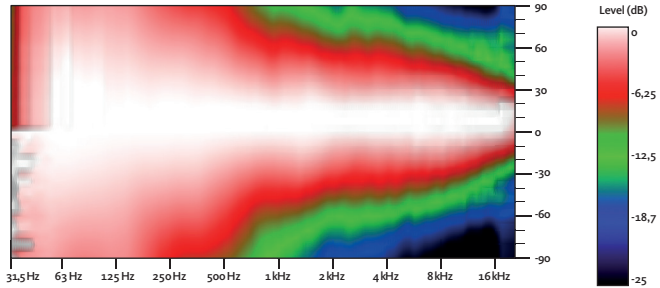


REAR VIEW

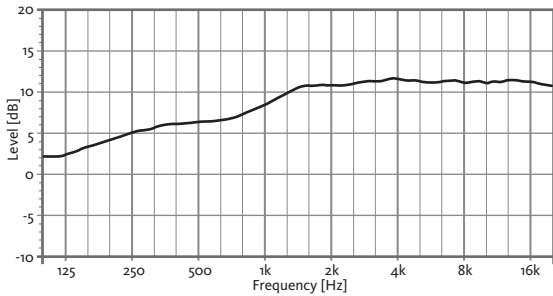
FREQUENCY RESPONSE 1W/1m (FLAT PRESET)



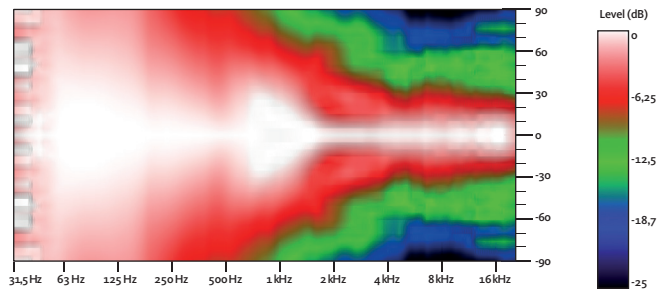
HORIZONTAL COVERAGE



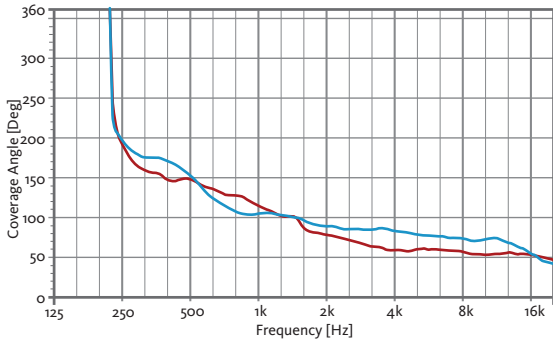
DIRECTIVITY INDEX (DI)



VERTICAL COVERAGE

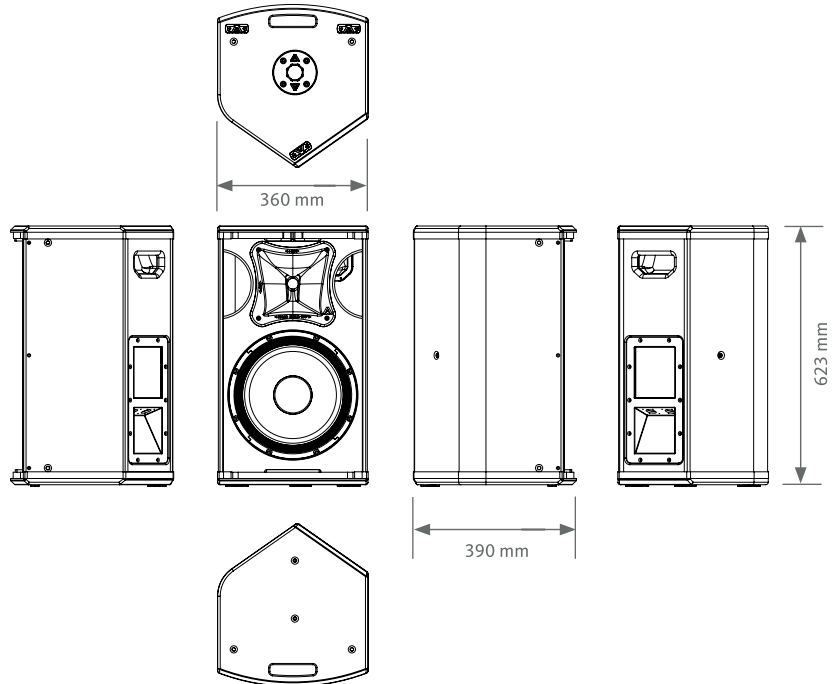


HORIZONTAL & VERTICAL BEAMWIDTH (-6dB point)

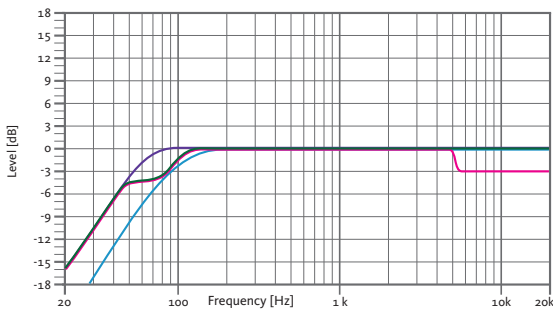


HORIZONTAL VERTICAL

CAD DRAWING SCHEME



BUILT-IN PRESETS



FLAT
Flat response
SPEECH
Vocal use

HPF90
HPF 90 Hz
MONITOR
Stage monitor use

ACCESSORIES

FLIGHT CASE

FC-N12
for two units of N12A6



WALL MOUNT BRACKET

UB-L



WALL-MOUNT BRACKET

SP-WHR



FLYING BAR

HR-S



M8 RIGGING EYEBOLT

ACR-M8



TELESCOPIC DISTANCE ROD

SP-CRTL

ø: 35 mm
Length: 55 cm ~ 90 cm
Thread: M20



FLYING BAR WITH HOOK

HR-S/GT



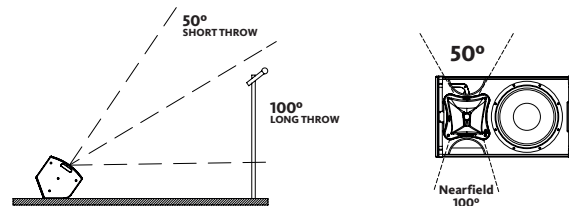
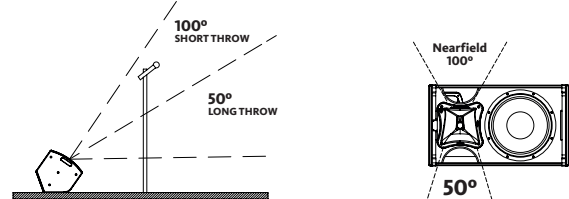
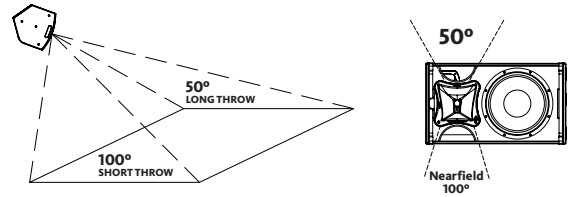
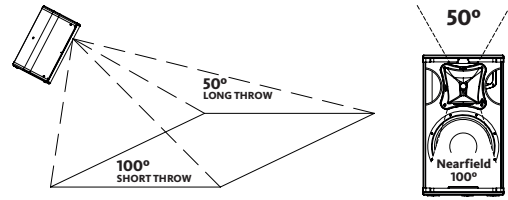
SAFETY SLING

SC-15

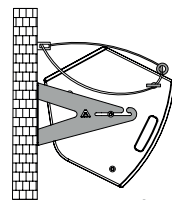


ASYMMETRICAL DISPERSION HORN

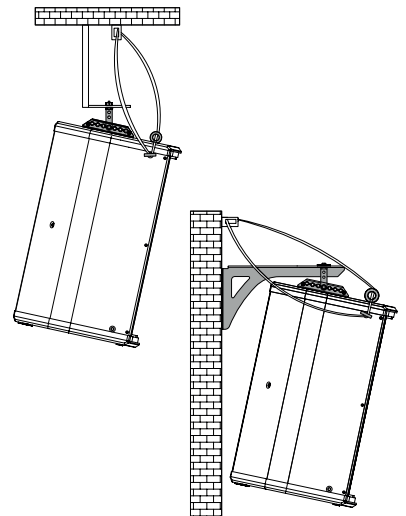
It allows to optimize the coverage depending on its position.



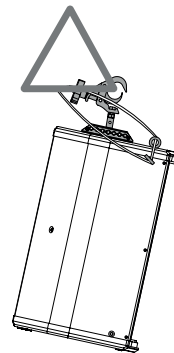
HORIZONTAL WALL-MOUNT
UB-L + SC-15



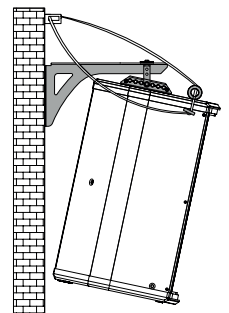
VERTICAL COLUMN-MOUNT
HR-S + SC-15



VERTICAL TRUSS-MOUNT
HR-S/GT + SC-15



VERTICAL WALL-MOUNT
SP-WHR + SC-15



DISCOVER NÍTID

UNIQUE DESIGN

Distinguishing details include the speaker grille, exclusively designed for an attractive appearance, maximum protection, and with the **best performance coefficient in the market, for improved sound quality**. The Polyurea® finish offers durable protection for the birch-ply cabinet, and electronic circuits and controls are smartly protected against moisture. A wide range of accessories is provided for whatever your application is.



THE PERFECT BALANCE

NÍTID series is the culmination of an intensive program of research, development and optimization, to achieve the greatest possible power and performance from the most compact sized cabinet. Every aspect of its form factor has resulted from examination and consideration of optimum acoustic response, ergonomics, construction and appearance.



AMAZING PERFORMANCE

The integrated 'plug & play' active power and control system includes DSP presets for rapid setup and amazing sound, and the comprehensive control interface includes instantly recallable presets for setting up the NÍTID in just a few seconds. The accurate match between transducers, DSP and amplifiers provide a fully optimized system for the most demanding applications.

